

Easy, Accurate, *Trusted.*



## Do It All: Multiple 1D and 2D barcodes at the same time!



### Every application. Every time.

Webscan was founded in 1995 with one singular goal: *to design and build the world's most accurate barcode verification systems.* Through optical, mechanical, and electronic technologies that power its offline and online systems, Webscan has earned an international reputation for delivering ease-of-use and unsurpassed accuracy, across every barcode application, every time. Today, leading packaging producers, defense, pharmaceutical companies, and retailers worldwide trust Webscan to be sure every barcode that goes to market complies with industry standards.

The TruCheck 2D Omni™ has an extra large field of view (up to 6 inches wide) and super high resolution. You can select multiple regions within your image so you can verify every barcode on a blister card, or several barcodes on a shipping label all at once. Verify your largest and smallest 1D and 2D codes with the same unit, and get accurate results every time! Using its high resolution 5 MP camera, the TruCheck Omni™ accurately creates any size round aperture to higher precision than relative low resolution competitive models.

### Calibration and traceability

All Webscan systems are calibrated and fully traceable to NIST standards. Calibration is performed by the user in a matter of seconds. Using long lasting solid-state LEDs, the TruCheck Omni™ evenly illuminates the large field of view with correct-wavelength red light, not hot, expensive halogen white lights that require a red filter and need to be replaced regularly. When the unit is not in use, exit Live Mode to turn off the LEDs, saving your company money. You always know that your system is measuring accurately with Webscan technology.

### Meets requirements of every industry

Meets GS1 standards and complies with ISO/IEC standards for 1D and 2D symbol quality measurement and accuracy compliance, including ISO/IEC 15415, ISO/IEC 15416, ISO/IEC 15426-1, ISO/IEC 15426-2

### Data validation

Check the syntax of 1D and 2D barcodes to confirm that the data content does not have errors. The hinged cover holds labels down for precise verification results and protects the window when not in use. Quickly shows you the content and meaning of GS1 coupons, pharmaceutical labels with expiration dates and lot numbers, or any data which follows common industry standards such as GS1 application identifier formats. View the verification results on our easy-to-use software interface or print out a complete diagnostic report.



## SPECIFICATIONS

### Symbologies:

Data Matrix, QR Code, Aztec Code, GS1-Datamatrix (formerly RSS), GS1-Composite Symbology, UPC/EAN, Code 128, Code 39, TLC-39, Codabar, PDF 417, Micro PDF 417, MSI Plessey, Interleaved 2 of 5, ITF-14, Laetus Pharmacode, Optional: Postnet & IMB, UPS Maxicode

### Versions

Model	Field of View	Min X Dim
HD*	100 x 75 mm	6.0 mil
XD	80 x 60 mm	6.6 mil
Wide Angle*	150 x 115 mm	7.0 mil
Standard	100 x 75 mm	9.0 mil
XL	150 x 112 mm	14.0 mil

\* Uses 5MP Camera

### Options:

- GS1 Calibrated Conformance Test Card
- Extended Service Plans

### Light Source:

- Narrow band 660nm LED

### Features:

- CCD Imager with Integrated Illumination
- ISO grading
- Data export to printer, PDF file or Excel
- Software easily upgradeable
- Calibrated to NIST traceable standards
- Parses and validates industry standard data formats
- Variable aperture size

### Decoding/Grading Analysis Specifications:

Full ISO 15415 Grading A, B, C, D, F: Unused Error Correction, Modulation, Axial non-uniformity, Grid non-uniformity, Symbol Contrast, Reference Decode, Finder Pattern Damage, Bar Width Growth (X and Y), Quiet Zone, AIM DPM Grading: Cell Contrast, Cell Mod.

### Physical Characteristics:

- Dimensions (LxWxD) 14 5/8" x 10 5/8" x 7 3/4"  
(373mm x 271mm x 196mm)
- Weight: 12 lbs (5.5 kg)
- Small footprint with large field of view

### Environment:

- Temperature: 0-40°C
- Humidity: 5% - 95% noncondensing

### Conformance:

- ISO 15415, 15416, 15426-1&2, AS-9132, AIM DPM-2006

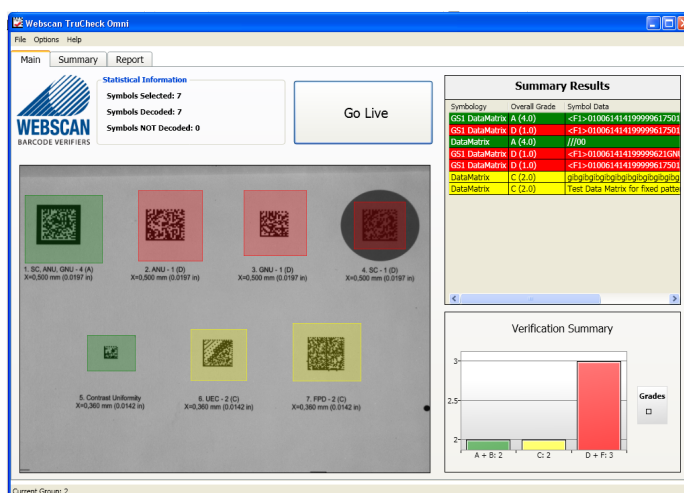
For more information, please contact:

## Ready for the future

Whether you are verifying 2D barcodes now, or later, the TruCheck Omni™ is ready for any of your current and future requirements.

## Webscan commitment

Since 1995, Webscan has been solely focused on designing and manufacturing the world's most accurate and reliable barcode verification equipment. We have earned the reputation as industry experts from our work on standards committees and customer support. With Webscan you know your codes are being verified properly and your customers will recognize your commitment to barcode quality.



User Interface Screen showing results of all decoded regions



Cognex Corporation (Formerly Webscan, Inc.)

1341 Sherman Drive | Unit D | Longmont, CO 80501

Tel 303.485.6811 | Fax 303.485.6353

[www.webscaninc.com](http://www.webscaninc.com)

©2017 Cognex Corporation. All rights reserved. Preliminary specifications, subject to change.